



Lynx[®].sc 2.4 and 5.8 GHz, Fractional Capacity License-Free Microwave Radios (56-512 kbps)

Applications

- Backbone and spur connections
- New points of presence and direct connections to customers
- Building-to-building connectivity
- Temporary, emergency and permanent leased line replacement

Features and Benefits

- No operating license required (in many countries)
- Two V.35 (56-256 kbps) connections or One (56-512 kbps) connection
- Frequency Range:
 - 2.4 GHz ISM: 2400-2483.5 MHz
 - 5.8 GHz ISM: 5725-5850 MHz
- Compliant with FCC (United States) Part 15.247 (ISM) and IC (Canada) RSS-210 and RSS-139 rules
- Point-to-point communications from less than 1 mile to more than 50 miles
- Wide DC Power Input ± 20 to ± 63 V
- Wide operational temperature
- Built-in loopback, far-end monitoring and orderwire
- 2 Year Warranty

Instant connectivity for long distances

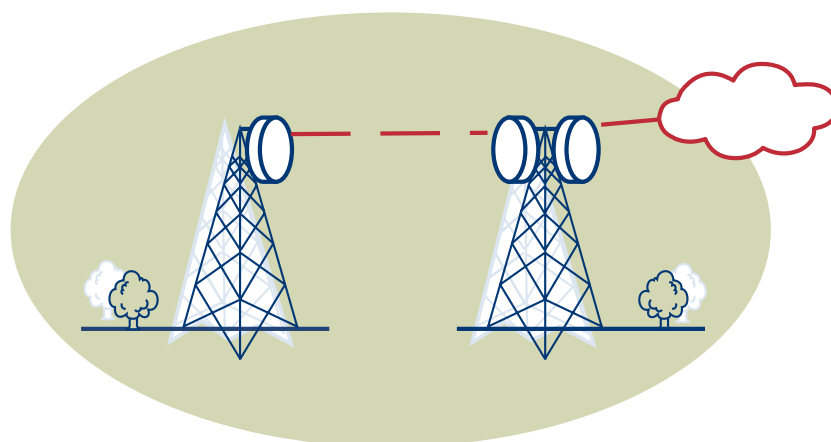
The LYNX.sc Fractional microwave radios provide wireless full-duplex 56, 64, 128, 256 and 512 kbps synchronous connectivity under license-free regulations (ISM). Under these regulations, these radios require no frequency coordination or licensing, resulting in 'instant' connectivity of fractional capacity data and voice access for line-of-sight distances beyond 50 miles.

Voice and data transmission

V.35 connections transport full-duplex channels of voice and/or data traffic up to 512 kbps. Additional services such as voice orderwire and auxiliary data are also provided.

Cost-effective connections at wire-speed

LYNX.sc radios provide wire-speed connections that are more reliable than fiber or wire. These radios provide significant cost savings compared to leased-line connections and also allow fast and easy connections where wire or fiber access is impossible or too costly.



Voice and Data Backhaul

Lynx.sc Specifications

	FREQUENCY BAND	DIGITAL CAPACITY (RATE)	THRESHOLD (BER=1X10 ⁻⁶)	OUTPUT POWER	SYSTEM GAIN
Model 31900	2400-2483.5 MHz	56 – 512 kbps	-95 dBm	+27 dBm	122 dB
Model 31950	5725-5850 MHz	56 – 512 kbps	-95 dBm	+20 dBm	115 dB

SYSTEM

Antenna Connector	N-type female
RF Attenuation Range	20 dB, minimum
Output Power (31900)	>+27 dBm, +30 dBm typical
Output Power (31950)	>+20 dBm, +23 dBm typical
Maximum Receive Level	0 dBm, error free +10 dBm no damage
Processing Gain	10 dB, minimum
Modulation	OQPSK
Coding	Direct sequence
Number of Codes	4 (selectable)
Regulatory Compliance	FCC Part 15.247, Class B; IC RSS210/139; ETS 300-328

DIGITAL LINE INTERFACES

Data Capacity, Input #1	Selectable: 56, 64, 128, 256, 512 kbps
Data Capacity, Input #2	Selectable: 56, 64, 128, 256 kbps
Total Capacity (#1 + #2)	≤ 512 kbps
Data Interfaces	V.35, Winchester (34-pin)
Far-end Loopback	Local or remote control (Internal/external signal source)

AUXILIARY CONNECTIONS

Orderwire Handset	2-wire, RJ-11
VF Orderwire Bridge	600 W balanced, 4 wire, 0 dBm, DB-25
Diagnostics Port	RS-232/RS-422 (craft/TBOS), DB-9
Aux Data Port	RS-232/RS-422, <9600 baud, DB-9
Alarm Port	2 Form C, 6 TTL, DB-25
Test Points	Output power, near & far-end RSL

POWER/ENVIRONMENT

DC Power	±20 to ±63 Volts, <45 Watts
Optional AC Adapter	100-250 Volts, 50-60 Hz
Power Connector	6-pin barrier strip, plug in
Operational Temperature	-30 to +65°C
Humidity	0 to 95% non-condensing
Altitude	15,000 ft (4570 m), maximum

PHYSICAL

Size (WxHxD) ¹	17.2 x 3.5 x 14.5 inches (2RU) 43.7 x 8.9 x 36.8 cm
Weight	11 pounds (5 kg)

¹ 19-inch EIA rack mount, 2-unit height (mounting brackets supplied).

ORDERING INFORMATION

System	Channel Options	Manual
301-31900-1XXX 2.4 GHz, V.35	Diplexer XXXXX-1A1X A1/B1 Channel	XXXXX-XXX0 English
301-31950-1XXX 5.8 GHz, V.35	XXXXX-1A2X A2/B2 Channel	XXXXX-XXX1 Spanish
	XXXXX-1C1X C1/D1 Channel	
	XXXXX-1C2X C2/D2 Channel	
AC/DC Adapter Option Available	XXXXX-1E1X E1/F1/G1 Channel *	
201-31070-1	XXXXX-1E2X E2/F2/G2 Channel *	

*G-channels available only on model 31900.

Proxim Corporation tel: 800.229.1630
 935 Stewart Drive tel: 408.731.2700
 Sunnyvale, California 94085 fax: 408.731.3675